

RESOLUTION NO. 2012/13-03

**RESOLUTION OF THE BOARD OF EDUCATION OF THE
RIVERSIDE UNIFIED SCHOOL DISTRICT RECOMMENDING
THAT THE RIVERSIDE COUNTY COMMITTEE ON SCHOOL DISTRICT ORGANIZATION
APPROVE AND ESTABLISH TRUSTEE AREAS
FROM WHICH DISTRICT GOVERNING BOARD MEMBERS WILL BE
ELECTED IN A BY-TRUSTEE AREA ELECTION PROCESS**

WHEREAS, The Riverside Unified School District (“District”) currently uses an at-large system of electing its governing board members; and

WHEREAS, In a by-trustee area system of election, candidates for the District’s governing board (the “Board”) must reside within a specific geographic subarea of the District called a “trustee area” and candidates are elected only by the voters of that trustee area; and

WHEREAS, One method of transitioning from an at-large electoral system to a by trustee area electoral system is for the school district board of trustees to petition the local county committee on school district organization by resolution to initiate the transition under California Education Code section 5019(c)(1); and

WHEREAS, the Riverside County Committee on School District Organization (“Committee”) has indicated that it will initiate this process on behalf of the District at the District’s request, and will consider any recommendation on specific trustee areas made by the District; and

WHEREAS, on June 18, 2012, the Board adopted Resolution No. 2011/12-87 recommending that the Committee approve a by-trustee area election process; and

WHEREAS, District staff and consultants have prepared proposed trustee area plans and recommendations, and community representatives have prepared proposed trustee area plans and recommendations (the “Plans”) that the Board has considered (Scenarios A – K and Options 3, 6 and 8); and

WHEREAS, the Board has conducted public forums on May 14, 2012, May 15, 2012, and May 16, 2012, to receive public input and comment on the Plans developed at that time; and

WHEREAS, the Board has conducted a public hearing on May 21, 2012 to receive public input and comment on the Plans developed at that time; and

WHEREAS, at the Board’s request, District staff and consultants met with community representatives on July 11, 2012 to garner a better understanding of community interests; and

WHEREAS, the Board has considered revised Plans on June 18, 2012, August 20, 2012 and September 4, 2012; and

WHEREAS, beginning May 7, 2012, the District staff posted all relevant information on the District's web site and has collected electronic messages as a means to receive public input and comment on the Plans; and

WHEREAS, the Board has considered all such public input and comment on the Plans; and

WHEREAS, the Board desires to adopt Plan I and hereby recommends Plan I to the Committee for its consideration based upon the findings, analysis and recommendations contained in the report attached hereto and incorporated herein as Exhibit "A"; and

NOW THEREFORE, be it resolved by the Board of Education of the Riverside Unified School District as follows:

1. That the above recitals are true and correct.
2. That the Board hereby adopts Plan I and recommends Plan I to the Committee for consideration and adoption.
3. That the Superintendent and/or his designee take all actions necessary to notify the Committee of the Board's determination forthwith and provide whatever assistance may be required by the Committee to complete the process.


ADOPTED, SIGNED AND APPROVED this 17th day of September, 2012.



Gayle Cloud
President of the Governing Board for the
Riverside Unified School District

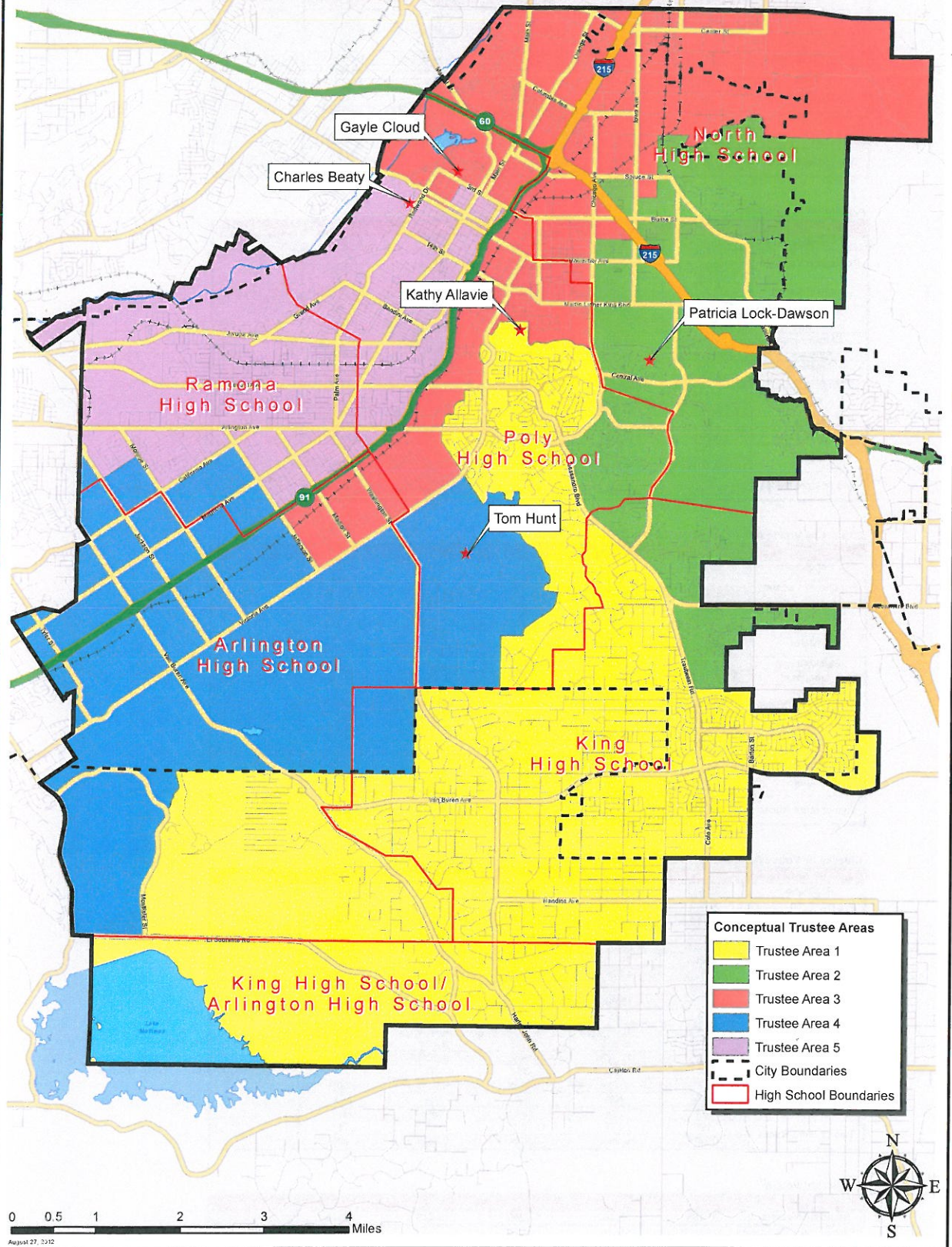
I, Kathy Allavie, Clerk of the Governing Board of the Riverside Unified School District, do hereby certify that the foregoing Resolution was adopted by the Governing Board of said District at a meeting of said Board held on the 17th day of September, 2012, and that it was so adopted by the following vote:

AYES: 5
NOES: 0
ABSTAIN: 0
ABSENT: 0



Kathy Allavie
Clerk of the Governing Board of the
Riverside Unified School District

	Total Population	Variance	Population 18 and Over	Variance	Citizen Voting Age Population 2005-2009 Estimate	Variance	Citizen Voting Age Population 2006-2010 Estimate	Variance
Trustee Area 1	48,728	-0.68%	35,494	-2.85%	29,838	7.72%	32,411	7.96%
Trustee Area 2	48,061	-2.08%	39,787	8.90%	28,552	3.07%	33,826	12.67%
Trustee Area 3	48,959	-0.21%	33,683	-7.81%	22,435	-19.01%	23,469	-21.83%
Trustee Area 4	48,977	-0.17%	36,184	-0.96%	27,104	-2.15%	29,388	-2.11%
Trustee Area 5	50,576	3.00%	37,529	2.72%	30,575	10.38%	31,013	3.30%
Total	245,301	5.08%	182,677	16.71%	138,504	29.39%	150,107	34.50%



August 27, 2012

Riverside Unified School District
Conceptual Trustee Areas Scenario I

Total Population

	Trustee Area 1	Trustee Area 2	Trustee Area 3	Trustee Area 4	Trustee Area 5	Variance
Population	48,728	48,061	48,959	48,977	50,576	
Population Variance	-332	-999	-101	-83	1,516	5.08%
Hispanic/Latino	12,749	12,893	32,712	21,949	23,532	
White	26,658	19,508	9,333	19,780	20,910	
Black/African American	3,347	4,447	3,802	2,627	3,371	
American Indian/Alaska Native	146	147	182	269	257	
Asian	4,265	9,143	1,886	2,979	1,142	
Native Hawaiian/Other	89	156	191	173	132	
Other	0.18%	0.32%	0.39%	0.35%	0.26%	
Two or More Races	1,378	1,632	758	1,080	1,149	
	2.83%	3.40%	1.55%	2.21%	2.27%	

Population 18 and Over

	Trustee Area 1	Trustee Area 2	Trustee Area 3	Trustee Area 4	Trustee Area 5	Variance
Population	35,494	39,787	33,683	36,184	37,529	
Population Variance	-1,041	3,252	-2,852	-351	994	16.71%
Hispanic/Latino	8,196	9,589	20,613	14,157	15,213	
White	20,634	16,583	7,842	16,525	17,720	
Black/African American	2,443	3,603	2,841	2,058	2,575	
American Indian/Alaska Native	105	115	135	207	223	
Asian	3,314	8,521	1,613	2,382	941	
Native Hawaiian/Other	66	108	126	121	106	
Other	0.19%	0.27%	0.37%	0.33%	0.28%	
Two or More Races	677	1,151	450	652	684	
	1.91%	2.89%	1.34%	1.80%	1.82%	

Citizens by Voting Age Population Estimate (2005-2009)

	Trustee Area 1	Trustee Area 2	Trustee Area 3	Trustee Area 4	Trustee Area 5	Variance
Population	29,838	28,552	22,435	27,104	30,575	
Population Variance	2,137	851	-5,266	-597	2,874	29.39%
Hispanic/Latino	6,530	6,669	11,231	7,624	8,359	
White	18,166	14,729	7,367	15,826	17,417	
Black/African American	2,141	2,885	2,428	1,716	2,887	
American Indian/Alaska Native	128	63	216	171	278	
Asian	2,194	3,364	917	1,233	989	
Native Hawaiian/Other	0.39%	0.40%	0.46%	0.08%	0.30%	
Other	N/A	N/A	N/A	N/A	N/A	
Two or More Races	562	727	172	513	554	
	1.88%	2.55%	0.77%	1.89%	1.81%	

Citizens by Voting Age Population Estimate (2006-2010)

	Trustee Area 1	Trustee Area 2	Trustee Area 3	Trustee Area 4	Trustee Area 5	Variance
Population	32,411	33,826	23,469	29,388	31,013	
Population Variance	2,390	3,805	-6,552	-633	992	34.50%
Hispanic/Latino	7,076	7,795	12,187	9,233	10,285	
White	20,265	16,213	7,689	16,136	17,470	
Black/African American	2,259	3,409	2,469	2,041	2,475	
American Indian/Alaska Native	44	25	23	123	171	
Asian	2,634	6,015	1,057	1,790	530	
Native Hawaiian/Other	24	52	36	18	7	
Other	0.07%	0.15%	0.15%	0.06%	0.02%	
Two or More Races	109	317	8	47	75	
	0.34%	0.94%	0.03%	0.16%	0.24%	

Registered Voters^[1]

	Trustee Area 1	Trustee Area 2	Trustee Area 3	Trustee Area 4	Trustee Area 5	Variance
Registered Voters	26,186	23,462	17,262	20,443	22,019	N/A

[1] Source: Statwide Database, University of California, Berkeley